

SOCIAL STAGES OF PLAY

Unoccupied Play



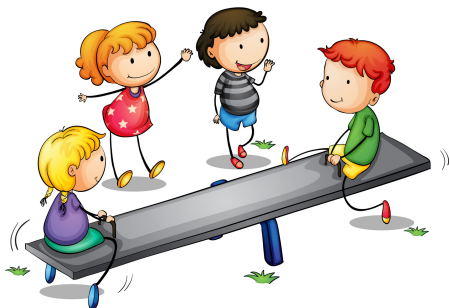
The random movements that Infants make with no clear purpose is the beginning of play.

Solitary Play



When children start to play on their own. Children do not seem to notice other children sitting or playing nearby during this type of play

Onlooker Play



When children watch others play. The child who is looking may ask questions but there is no effort to join the play.

Parallel Play



When children begins to play side-by-side with other children without any interaction. They are paying attention to each other.

Associative Play



When children start asking questions of each other. They have similar goals but there are no set rules.

Social Play



When children begin to share ideas and toys, and follow established rules and guidelines.